

# BASS

## UO JAZZ ENSEMBLE AUDITIONS 2023-24

Hello and welcome to the 2023-24 school year! This document outlines the audition requirements for UO Big Bands, Small Group (Combo), Latin Jazz, and Guitar Ensemble Auditions. All of these groups are open to UO students regardless of their major, so we hope you'll join us!

**Please Note:** a single audition is used to place students in all of these ensembles. A separate audition is necessary to be considered for placement in the JazzArts Oregon Small Group. Audition and sign-up information for that group is found at the bottom of the [Jazz Ensembles Audition page](#).

You may also use the following link to sign up for your audition time:

[https://oregon.qualtrics.com/jfe/form/SV\\_brSQ1nEw8Qsq4d0](https://oregon.qualtrics.com/jfe/form/SV_brSQ1nEw8Qsq4d0)

*Bass Auditions*

*Room 184*

*10:00 am - 1:00 pm*

*Friday, September 22nd*

### AUDITION MATERIALS

The written excerpts included below should be prepared for all jazz ensemble placement auditions. In addition, you will be asked to sight-read typical ensemble parts, including both notated parts and parts which use lead sheet notation. All bassists will also be asked to walk and improvise over a blues in Concert Bb (Blues Walk). Students auditioning for more advanced small groups are also asked to solo over standard chord changes on sight.

Each excerpt should be prepared to the best of your ability along with a metronome at the designated tempo. If an excerpt is beyond your ability at this time, you may choose to play it at a slower tempo or simply work on those passages that you are capable of performing.

#### Excerpts for all Bassists:

1. Jazz Excerpt #1 | Swing ♩ = 132 (*full etude*)
2. Old Country | Swing ♩ = 144 (*highlighted excerpts*)
3. Blues Walk

On Blues Walk - play the melody once, and then walk for 1-2 choruses, then improvise a solo for two to four choruses. You may perform Blues Walk at a medium tempo or a fast tempo - your choice.

#### Additional excerpts for bassists auditioning for large jazz ensemble

4. Echo Chamber | Straight 8ths ♩ = 160 (*first page*)
5. Wink | Up Tempo Swing ♩ = 120 (*full excerpt*)

Bass

1) Jazz Excerpt #1 – Swing (1/4 note = 132)

MEDIUM SWING  $\text{♩} = 132$

Chord progression (measures 1-57):

- 1-2: Eb7
- 3-4: Ab7
- 5-6: G7ALT
- 7-8: C7sus
- 9-10: A7(#9)
- 11-12: Ab7
- 13-14: G7sus
- 15-16: Cm7
- 17-18: Eb7
- 19-20: Ab7
- 21-22: G7ALT
- 23-24: Cm11
- 25-26: Eb7
- 27-28: Ab7
- 29-30: G7ALT
- 31-32: Cm7
- 33-34: Fm7
- 35-36: Bb7(b9)
- 37-38: EbMA7
- 39-40: Ab7
- 41-42: Dm7(b9)
- 43-44: G7ALT
- 45-46: Cm7
- 47-48: Fm7
- 49-50: Bb7(b9)
- 51-52: EbMA7
- 53-54: A7
- 55-56: Ab7
- 57: G7(#9)

# THE OLD COUNTRY

ACOUSTIC BASS

NAT ADDERLEY/ARRANGED BY PAUL MCKEE

MEDIUM SWING ♩ = 144

*mf*

**16** **TWO FEEL**

$A_m7(\flat 5)$   $D7(\flat 9)$   $G_m$

$G_m$   $C_m7$   $F7(\flat 9)$   $B\flat maj9$

**24**  $B\flat maj9$   $A_m7(\flat 5)$   $D7(\flat 9)$   $G_m7$   $G_m7/F$

$E_m7(\flat 5)$   $E_b9(\sharp 11)$   $A_m7(\flat 5)$   $D7(\flat 9)$

**32** **WALK**

$G_m$   $A_m7(\flat 5)$   $E_b9$   $D7(SUS4)$   $G_m$

$G_m$   $C_m7$   $C_m7/F$   $F7(\flat 9)$   $B\flat maj9$

**40**  $E_b maj7$

ACOUSTIC BASS

$C(\text{add}2)/E$   $E\flat^9(\sharp 11)$   $A\text{m}7(\flat 5)$   $D7(\flat 9)$

*mf*

48

56  $G\text{m}^9$   $A\text{m}7(\flat 5)$   $D7(\flat 9)$   $G\text{m}^9$

$G\text{m}^7$   $C\text{m}^7$   $F7(\flat 9)$   $B\flat\text{maj}^9$

64  $B\flat\text{maj}^9$   $A\text{m}7(\flat 5)$   $D7(\flat 9)$   $G\text{m}^9$

1.  $E\text{m}7(\flat 5)$   $E\flat^9(\sharp 11)$   $A\text{m}7(\flat 5)$   $D7(\flat 9)$   $G\text{m}^9$

2.  $E\text{m}7(\flat 5)$   $E\flat^9(\sharp 11)$   $A\text{m}7(\flat 5)$   $D7(\flat 9)$

75

*f*

2

87

SOLI- W/TROMBONES & TENORS

ACOUSTIC BASS

3

Measures 87-94: Bass line with dynamics *mp*. Includes triplets and slurs.

95

Measures 95-102: Bass line with dynamics *mp*. Includes a triplet and a **TUTTI** marking.

103

Measures 103-110: Bass line with dynamics *mp*. Includes a **WALK** marking and chords *Gm7* and *Ab9*.

*Gm Db13(SUS4) Gbmaj7 A13 Dmaj7 Cm7/F Bbmaj7 Ab13*

Measures 103-110: Bass line with dynamics *mf*.

111

Measures 111-118: Bass line with dynamics *f*. Includes a **WALK** marking and chords *Gm*, *Fm7/Bb*, and *Bb13*.

119

Measures 119-126: Bass line with dynamics *f*. Includes a **WALK** marking and chords *Gm*, *Am7(b5)*, *Eb9*, *D7(SUS4)*, and *Gm*.

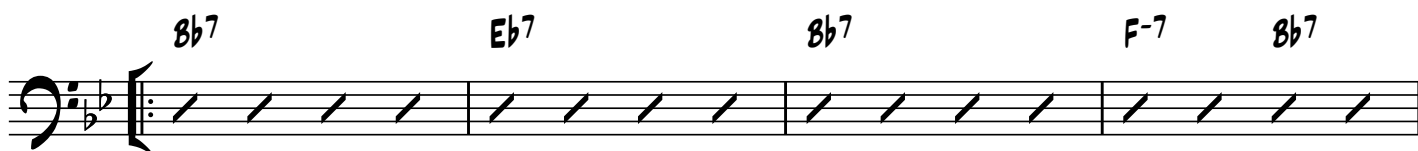
*Gm Cm7 Cm7/F F7(b9) Bbmaj9*

Measures 119-126: Bass line with dynamics *f*.



# THE BLUES WALK

CLIFFORD BROWN



# ECHO CHAMBER

Medium-Fast (♩=160)

1 8 9

18

22

26

30

34

38

42 *p*

46

50

Wink by Neil Slater  
Half note = 120

30

34

38

Soli w/ Alto & Trb.

42

46

w/ Piano L.H.

*mf*

50

*f*

Detailed description: This is a page of musical notation for the piece 'Wink' by Neil Slater. The score is written in bass clef and consists of five systems of music. The first system starts at measure 30 and ends at measure 33. The second system starts at measure 34 and ends at measure 37. The third system starts at measure 38 and ends at measure 41. The fourth system starts at measure 42 and ends at measure 45. The fifth system starts at measure 46 and ends at measure 49. The sixth system starts at measure 50 and ends at measure 53. The notation includes various rhythmic values, accidentals, and dynamic markings. A box containing the number '30' is located at the beginning of the first system. A box containing '38' is at the beginning of the third system. A box containing '46' is at the beginning of the fourth system. A box containing '50' is at the beginning of the sixth system. The dynamic marking *mf* (mezzo-forte) appears below the fourth system, and *f* (forte) appears below the sixth system. The instruction 'Soli w/ Alto & Trb.' is written above the third system. The instruction 'w/ Piano L.H.' is written above the fourth system. There are also some performance markings like accents and slurs throughout the score.